



## 2023 ANNUAL REPORT

### MISSION STATEMENT

The mission of T&E Care is to maintain a network of people providing short-term financial and other material assistance to persons in need in and around the Tredyffrin and Easttown Township area.

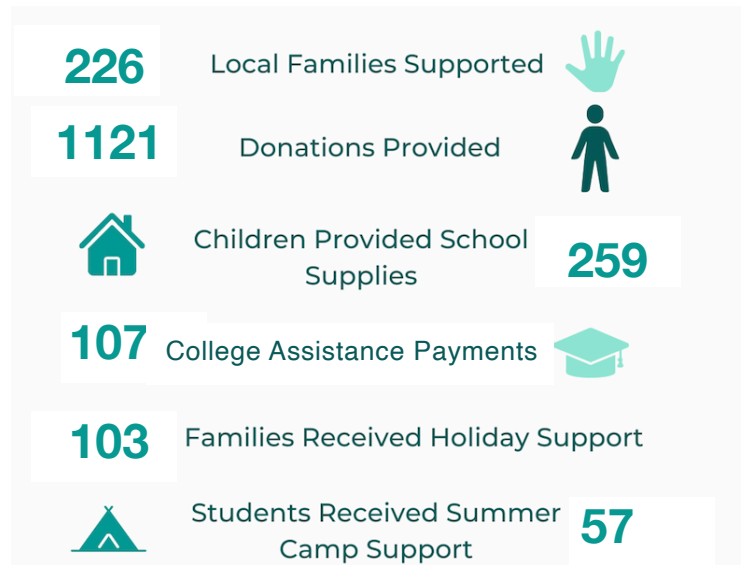
### MESSAGE FROM THE PRESIDENT & CO-CHAIRS OF THE BOARD

As we celebrate our 18<sup>th</sup> year as a community focused nonprofit, 2023 is a year marked by resilience, collaboration, and determination, within our organization and across the Tredyffrin & Easttown communities. Requests for general assistance were down substantially, falling by 22% vs. 2022, with spending levels in many categories reverting to levels last seen prior to the pandemic. It is a testament to our community that T&E Care was so prevalent during the pandemic timeframe and heartening to witness our area stabilizing now. We continue to be deeply grateful for the generosity of our community donors and business sponsors who continued to fervently support us, despite the cancellation of our annual fundraising event due to weather, and throughout the year. This year we welcomed three new board members and sought to forge new relationships with local businesses to expand our fundraising initiatives. Above all we appreciate the opportunity to expand our relationship with the entire T&E community.


### COMMUNITY IMPACT

ASSISTANCE	2023
EDUCATION	\$157,000
HOUSING	\$81,000
HOLIDAY DRIVE*	\$75,000
TRANSPORTATION	\$36,000
SCHOOL SUPPLY DRIVE*	\$27,000
UTILITIES	\$19,000
CAMPS	\$17,000
OTHER	\$12,000
FOOD	\$11,000
COMPUTERS	\$8,000
MEDICAL	\$8,000
<b>TOTAL</b>	<b>\$451,000</b>

\* Includes value of items and gift cards



#### Words of Care

October 2023 – after we paid some bills for a mom who needed surgery – *I want to thank the board members for taking care of the Peco bill, Verizon and the Co-payment. I don't know what I would have done without you. This is a load off my mind and maybe I will be able to get some rest without worrying.*  
**THANK YOU, THANK YOU, THANK YOU!!** 

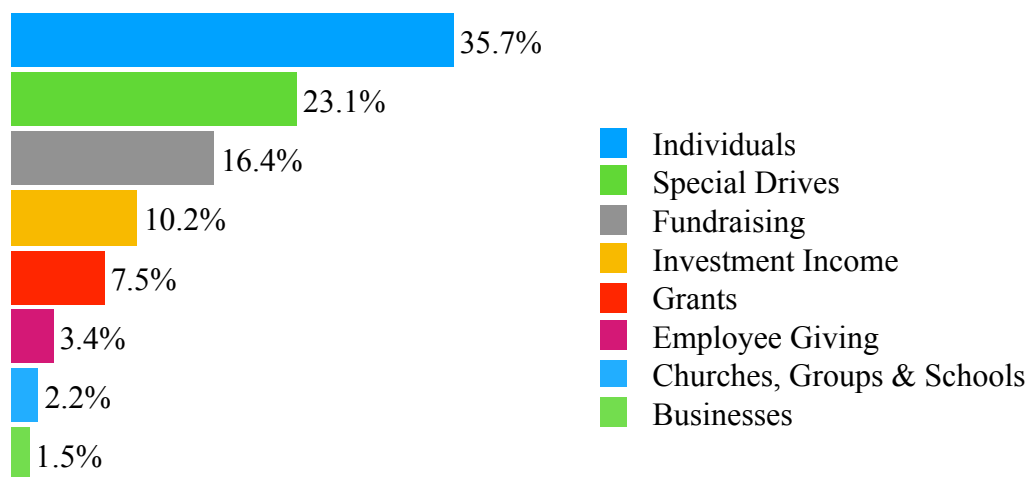
## SUPPORT

While the amount of financial support offered was somewhat reduced in 2023 compared to 2022, inflation and rising costs continue to increase the need for our support to local families. Over the years, we have continued to evolve and fine tune our support mechanisms and programs. While some families are finally getting back on track after the pandemic setbacks, we continue to learn of new families that need assistance. Over fifty new families were identified to T&E Care in 2023 with requests for assistance. In total, 236 different votes for assistance were approved by the Board - ranging from rent to utilities to mental health counseling to college assistance to car repairs. Thanks to the generosity of our community donors, T&E Care was again equipped to meet the continuing needs of our local neighbors.

## VOLUNTEERS AND DONORS

Our volunteers and donors are our most valuable asset as an organization. New volunteers and board members bring new ideas and innovations to our programs and are an impetus for continuous improvement. These individuals who volunteer their time are best able to promote and recommend our important work. In addition, our donors are true partners in every sense of the word and expand the reach of the work we can do. The long relationships we have formed with many individuals and organizations provides stability for the organization and for our work. We thank you for all your efforts to support T&E CARE.

## FUNDING SOURCES



### *Words of Care*

September 2023 - a donation received from a recent college graduate who we previously supported - *Thank you so much for all the help over the years. I believe I wouldn't be where I am today without all the opportunities T&E Care provided me. Looking forward to supporting the cause into the future.*

## CURRENT LEADERSHIP

Sandi Gorman, President  
Jean Allen, Board Co-Chairman  
Maryann Walsh, Board Co-Chairman  
Chris Bradley, Secretary  
Sara Vose, Treasurer

Lisa Nevins, Assistant Treasurer  
Jacqui Cosgrove  
Megan Fox  
Damika Harris  
Nancy Higgins

Todd Morrissey  
Stacy Stone  
Tina Whitlow

**Get Involved!** Please visit our website to see more information about our programming and opportunities for volunteers and donations.

**[www.tecare.org](http://www.tecare.org) / [information@tecare.org](mailto:information@tecare.org)**  
484-254-6510 / T&E Care, PO Box 2111, Southeastern, PA 19399